



Pacifica Radio - KPFA 94.1FM

Berkeley, California 1991

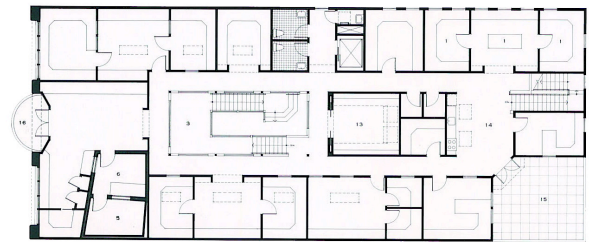
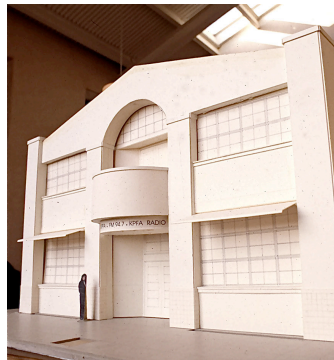
description Radio Station

size 12,000SF

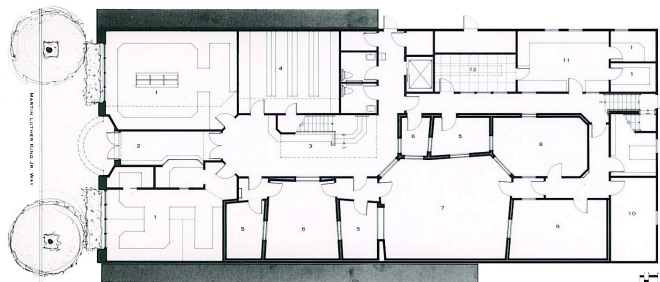
The new Pacifica Radio - KPFA 94.1 FM Building provides an efficient, economical, and memorable home for its two venerated Berkeley institutions. As community-based and listener-supported radio producers, Pacifica and KPFA depend on professional staff, and a diverse group of volunteers and contributors to facilitate their day-to-day operations. Accordingly, the design process engages all stakeholders by way of consensus-building meetings and extensive personal interviews. The resulting schematic renderings were used to galvanize a significant capital campaign and give new focus, energy and identity to both organizations. The design for the two-story wood-framed building includes state-of-the-art production studios, music library, conference rooms, offices, archives, roof garden, and support facilities. These spaces surround a luminous, skylit, two story atrium which accommodates the building's active social center.

Completed before the formation of Trachtenberg Architects

David Trachtenberg was the Licensed Architect of Record for Abrams/Millikan & Associates



SECOND FLOOR



GROUND FLOOR