

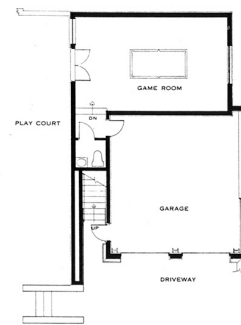
Farb-Garrett Guest House

Berkeley, California 1994

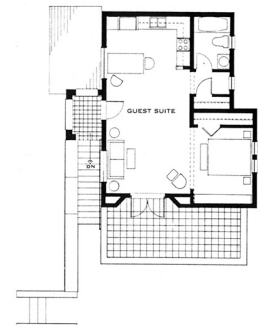
description Residential Addition
size 1700SF

This new garage/guest house replaces a single-story garage that burned down in the Oakland/Berkeley fire of 1991. The garage serves a large historic house that is a neighborhood landmark. The new building consists of a two-car garage, a game room at grade with an outdoor play court and a second floor guest suite of 680 square feet with a south facing deck. The total square footage of the building and the garage is 1,630 square feet.

The small building mediates between the scale of the neighborhood with that of the older house. The form and detailing language of the new building borrows freely from the the older main house; it feels cut from the same cloth as the mother building. New site walls, site stairs, large ornamental bollards, paving and landscaping, all help to knit the many elements of this estate on its large site.



first floor



second floor

